

Giving an Aussie icon a facelift



PROJECT bulletin



Smart Steel Hollow Sections

Orrcon Steel's Intelligent Construction Solutions

PROJECTbulletin

QUICKfacts

Project Melbourne Cricket Ground

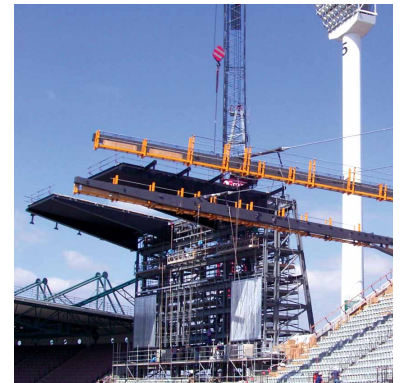
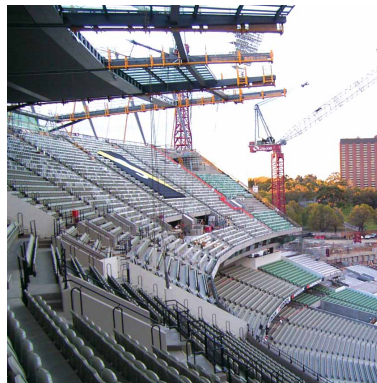
Contractor Grocon Constructions

Architects MCG5 (Daryl Jackson Architects, Hok Sport, Tompkins Shaw & Evans, Hassell & Cox Architects)

Structural Engineers Connell Mott MacDonald & ARUP (CMAA)

Fabricator Alfasi Steel Constructions

Orrcon Steel Products **Orrcon Steel Smart Steel Hollow Sections including:**
 RHS 65x65x2.0, 38x25x1.6;
 SHS 30x30x3mm to 250x250x9mm;
 CHS 273.1x6.4mm up to 406.4x12.7mm



The 2006 Commonwealth Games in Melbourne were a fitting debut for the magnificent new Northern Stand at the Melbourne Cricket Ground (MCG). The three year redevelopment project valued at \$434 million used approximately 1000 tonnes of Orrcon Steel's Smart Steel Hollow Sections in the support columns, seating framework and roof structure.

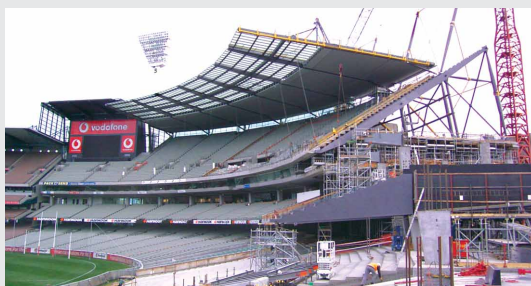
Alfasi Steel Constructions, who specialise in the construction of high profile and complex architectural steel structures, worked together with Orrcon Steel on this iconic Australian sporting venue.

Director of Alfasi, Mr. Gill D'Vier said, "The MCG structure involved constructing a cable-stay roof - a steel structure incorporating Orrcon Steel's Smart Steel Hollow Sections, and held in place by large diameter cables... we were able to shop detail, fabricate and erect this steelwork to the highest standards".

"These cable stay structures, once fully assembled on the ground, had to be craned into place with extreme accuracy. At 40 metres long and weighing up to 20 tonnes, we created a very detailed erection methodology to ensure a correct fit and maximise safety for construction staff."

The redevelopment also included construction of new world class seating in the Northern Stand. Here too, Orrcon Steel made its mark through the timely delivery of Australian Made precision Smart Steel Hollow Sections. The new seating provides optimum comfort and visibility of the playing area for members and spectators.

For more information give Orrcon Steel a call on 1300 665 757.



Orrcon Steel Head Office
121 Evans Road, Salisbury, Queensland 4107

www.orrconsteel.com.au

we'll see it through

