

# On track with Perth commuters



**PROJECT** bulletin

# Smart Steel Hollow Sections

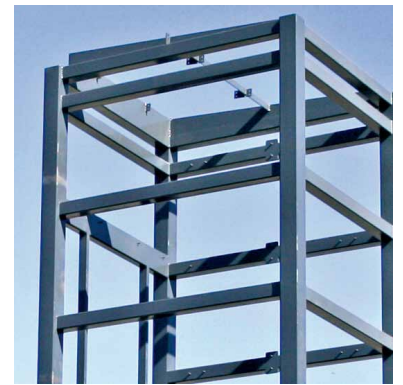
Orrcon Steel's Intelligent Construction Solutions



## PROJECTbulletin

## QUICKfacts

Project	Perth-Mandurah Railway
Customer	Public Transport Authority WA State Government
Building	
Contractor	RailLink Joint Venture
Design	
Team	Maunsell-Sinclair Knight Merz
Fabricator	Jupiter Steel Fabricators
Orrcon Steel	
Products	<b>Orrcon Steel Smart Steel Hollow Sections including:</b> RHS 200x100 x 6.0 & 250x150x5.0/6.0; SHS 150x150x6.0, 200x200x6.0/9.0, 250x250x6.0/9.0; CHS 273.1x4.8, 323.9x9.5.



**Australian Made Orrcon Steel Smart Steel Hollow Sections play a large part in the construction of four stations on the new Perth-Mandurah railway project valued at over \$300 million.**

Project construction company Jupiter Steel's Director/General Manager, Mr. Russell Lang, said "The railway stations are our major project at the moment, and plenty of Orrcon Steel's Hollow Sections are being used to make them look superb."

Elements of the four stations incorporating Orrcon Steel Smart Steel Hollow Sections include the lift shafts, columns, roof framing and covered walkways.

Designers and architects typically specify steel hollow sections in construction projects, as they offer a more architectural and contemporary appearance. Over 50 tonnes of rectangular, square and circular hollow sections have been used in each of the rail line's stations.

Mr. Lang said "We enjoy working with Orrcon Steel because we can get next-day and sometimes even same-day delivery, and not only are they competitive on price, but have a product range and alternative lengths in a range which suits our fabrication requirements."

The Perth-Mandurah railway – and in particular the stations and covered walkways – is a prime example of Orrcon Steel Smart Steel Hollow Sections facilitating smarter construction.

For more information give Orrcon Steel a call on 1300 677 266



Orrcon Steel Head Office  
121 Evans Road, Salisbury, Queensland 4107

[www.orrconsteel.com.au](http://www.orrconsteel.com.au)

we'll see it through

